



BLUESTONE TERRACE AND WALKS



CUTSTONE STEPS



STONE VENEER WALLS
BLUESTONE CAP



CRAB ORCHARD
CURB STONE



DRIVEWAY PAVERS



FOUNTAIN, BLUESTONE WALK
BENCHES, CLASSIC CONTAINERS

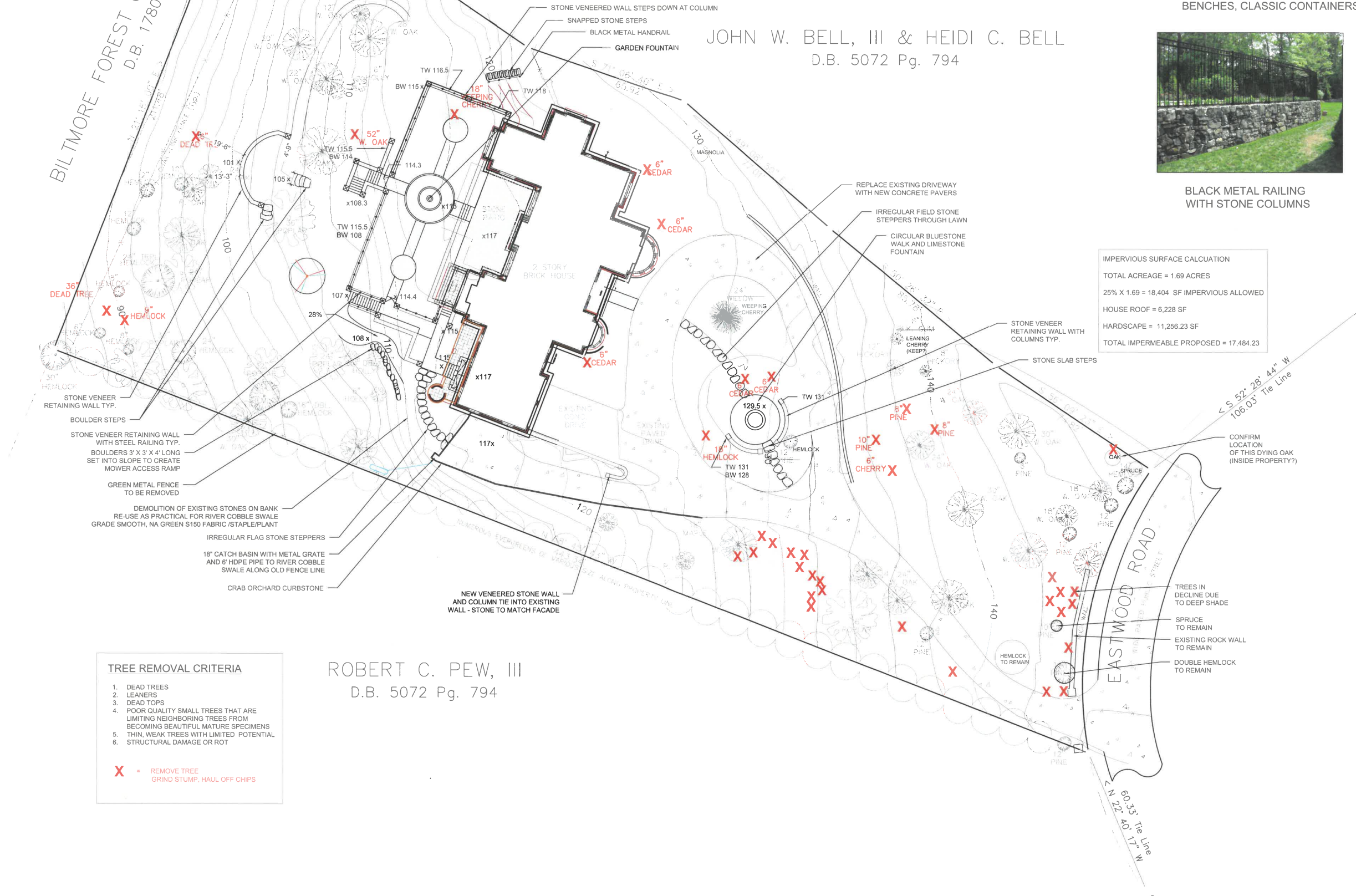


BLACK METAL RAILING
WITH STONE COLUMNS

BILTMORE FOREST COUNTRY CLUB, INC.
D.B. 1780 Pg. 102

JOHN W. BELL, III & HEIDI C. BELL
D.B. 5072 Pg. 794

ROBERT C. PEW, III
D.B. 5072 Pg. 794



IMPERVIOUS SURFACE CALCULATION

TOTAL ACREAGE = 1.69 ACRES
25% X 1.69 = 18,404 SF IMPERVIOUS ALLOWED
HOUSE ROOF = 6,228 SF
HARDSCAPE = 11,256.23 SF
TOTAL IMPERMEABLE PROPOSED = 17,484.23

- TREE REMOVAL CRITERIA**
1. DEAD TREES
 2. LEANERS
 3. DEAD TOPS
 4. POOR QUALITY SMALL TREES THAT ARE LIMITING NEIGHBORING TREES FROM BECOMING BEAUTIFUL MATURE SPECIMENS
 5. THIN, WEAK TREES WITH LIMITED POTENTIAL STRUCTURAL DAMAGE OR ROT
- X** = REMOVE TREE
GRIND STUMP, HAUL OFF CHIPS



CONSULTANT

NO.

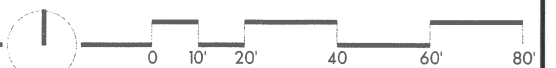
DE



PLANT SCHEDULE

TREES	QTY	BOTANICAL NAME	COMMON NAME	CONT	SIZE
CER TES	1	Cercis texensis 'Texas Traveler'	Dwarf Weeping Redbud	B & B	
COR PRI	17	Cornus florida 'Cherokee Princess'	Cherokee Princess Dogwood	B & B	8'-10' HT
COR R93	3	Cornus florida 'Rubra'	Pink Dogwood	15 gal	5'-6' HT
ILE SAT	7	Ilex opaca 'Satyrl Hill'	Satyrl Hill American Holly	B & B	6'-8' HT
ILE MA2	10	Ilex x 'Mary Nell'	Mary Nell Holly	B & B	8'-10' HT
LAG FAN	3	Lagerstroemia faunei 'Fantasy'	Japanese Crape Myrtle	B & B	10'-12' H
PIC ABI	1	Picea abies	Norway Spruce	B & B	8'-10' HT
STE PSE	2	Stewartia pseudocamellia	Japanese Stewartia	B & B	6'-8' HT
SHRUBS	QTY	BOTANICAL NAME	COMMON NAME	CONT	
ABE R09	124	Abelia x 'Rose Creek'	Rose Creek Abelia	3 gal	
BUD 117	5	Buddleja x 'Blue Chip Jr.'	Blue Chip Jr. Lo & Behold Butterfly Bush	3 gal	
CAL DIC	6	Callicarpa dichotoma	Beautyberry	3 gal	
CAM A36	8	Camellia x 'April Remembered'	Pink Cold Hardy Camellia	7 gal	
CAM XAP	5	Camellia x 'April Rose'	April Rose Camellia	3 gal	
CEP PRO	37	Cephalotaxus harringtonia prostrata	Prostrate Plum Yew	5 gal	
CEP HAR	7	Cephalotaxus harringtonia 'Duke Gardens'	Duke Gardens Plum Yew	7 gal	
COR SPI	9	Corytopsis spicata	Spike Winter Hazel	3 gal	
COR SP2	1	Corytopsis spicata	Spike Winter Hazel	3 gal	
DRY CHR	10	Dryopteris filix-mas 'Undulata Robusta'	Robust Undulated Male Fern	4" pot	
EDG CHR	5	Edgeworthia chrysantha	Paperbush	3 gal	
FOT MAJ	5	Fothergilla major 'Mount Airy'	Mount Airy Fothergilla	3gal	
GAR SUE	3	Gardenia jasminoides 'Summer Snow'	Gardenia 'Summer Snow'	3 gal	
HYD PIA	4	Hydrangea macrophylla 'Pia'	Pia Dwarf Hydrangea	3 gal	
HYD B62	6	Hydrangea paniculata 'Bobo'	Bobo Hydrangea	3 gal	
ILE HOO	33	Ilex crenata 'Hoogendorn'	Hoogendorn Japanese Holly	5 gal	
ILE JAP	5	Ilex crenata 'Sleeds'	Sleeds Japanese Holly	7 gal	
ILE GE5	18	Ilex glabra 'Gem Box'	Dwarf Inkberry Holly	3 gal	
IRI CRI	35	Iris cristata	Crested Iris	1 gal	
JUN SP2	6	Juniperus chinensis 'Spartan'	Spartan Juniper	B & B	
JUN OWL	3	Juniperus virginiana 'Grey Owl'	Grey Owl Juniper	3 gal	
PIE CAV	19	Pieris japonica 'Cavatine'	Lily of the Valley Bush	3 gal	
PIE WYK	16	Pieris japonica 'Dorothy Wycoff'	Dorothy Wycoff Lily of the Valley Shrub	3 gal	
PRU OT2	13	Prunus laurocerasus 'Otto Luyken'	Luykens Laurel	3 gal	
PRU NAR	16	Prunus laurocerasus 'Shipkaensis'	English Laurel (Not West Coast Skip)	B&B 3'-4' HT	
PRU ZAB	5	Prunus laurocerasus 'Zabeliana'	Zabel Laurel	5 gal	

GROUND COVERS	QTY	BOTANICAL NAME	COMMON NAME	CONT
[Pattern]	41	Ajuga reptans 'Catlin's Giant'	Catlin's Giant Bugleweed	1 gal
[Pattern]	245	Cerastogma plumbaginoides	Dwarf Plumbago	1 gal
[Pattern]	176	Geranium x cantabrigiense 'Blokovo'	Blokovo Cranesbill	1 gal
[Pattern]	23	Iris sibirica 'Butter and Sugar'	Butter and Sugar Siberian Iris	1 gal
[Pattern]	30	Iris sibirica 'Caesar's Brother'	Caesar's Brother Siberian Iris	1 gal
[Pattern]	2,272	Liloupe spicata	Creeping Lily Turf	4" pot
[Pattern]	934	Ophiopogon japonicus 'Nanus'	Dwarf Mondo Grass	4" pot
[Pattern]	3,465	Pachysandra terminalis	Japanese Spurge	2.5" Pot
[Pattern]	8,676	Vinca minor	Common Periwinkle	2.5"
[Pattern]	9,153	Vinca minor PHASE II	Periwinkle PHASE II	4" pot



CONSULTANT

CONSULTANT

NO.

CONS

F