

SAMPLE BALLOT

SAMPLE BALLOT

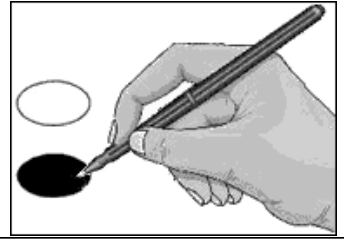
**Sample Ballot**  
**Buncombe County, North Carolina**  
**November 3, 2020**

**B0011**



**BALLOT MARKING INSTRUCTIONS:**

- A. With the marking device provided or a black ball point pen, completely fill in the oval to the left of each candidate or selection of your choice as shown.
- B. Where authorized, you may write in a candidate by filling in the oval and writing the name on the Write-in line.
- C. If you tear, deface or wrongly mark this ballot, return it to request a replacement.



<b>FEDERAL OFFICES</b>	<b>NC Lieutenant Governor</b> (You may vote for ONE)	<b>NC Treasurer</b> (You may vote for ONE)
<b>President and Vice President of the United States</b> (You may vote for ONE)	<input type="radio"/> <b>Mark Robinson</b> Republican <input type="radio"/> <b>Yvonne Lewis Holley</b> Democrat	<input type="radio"/> <b>Ronnie Chatterji</b> Democrat <input type="radio"/> <b>Dale R. Folwell</b> Republican
<input type="radio"/> <b>Donald J. Trump</b> <b>Michael R. Pence</b> Republican  <input type="radio"/> <b>Joseph R. Biden</b> <b>Kamala D. Harris</b> Democrat  <input type="radio"/> <b>Don Blankenship</b> <b>William Mohr</b> Constitution  <input type="radio"/> <b>Howie Hawkins</b> <b>Angela Walker</b> Green  <input type="radio"/> <b>Jo Jorgensen</b> <b>Jeremy (Spike) Cohen</b> Libertarian  <input type="radio"/> _____ Write-in	<b>NC Attorney General</b> (You may vote for ONE)	<b>NC Supreme Court Chief Justice Seat 1</b> (You may vote for ONE)
	<input type="radio"/> <b>Jim O'Neill</b> Republican <input type="radio"/> <b>Josh Stein</b> Democrat	<input type="radio"/> <b>Cheri Beasley</b> Democrat <input type="radio"/> <b>Paul Newby</b> Republican
	<b>NC Auditor</b> (You may vote for ONE)	<b>NC Supreme Court Associate Justice Seat 2</b> (You may vote for ONE)
	<input type="radio"/> <b>Anthony Wayne (Tony) Street</b> Republican <input type="radio"/> <b>Beth A. Wood</b> Democrat	<input type="radio"/> <b>Phil Berger, Jr.</b> Republican <input type="radio"/> <b>Lucy Inman</b> Democrat
	<b>NC Commissioner of Agriculture</b> (You may vote for ONE)	<b>NC Supreme Court Associate Justice Seat 4</b> (You may vote for ONE)
<b>US Senate</b> (You may vote for ONE)	<input type="radio"/> <b>Steve Troxler</b> Republican <input type="radio"/> <b>Jenna Wadsworth</b> Democrat	<input type="radio"/> <b>Tamara Barringer</b> Republican <input type="radio"/> <b>Mark Davis</b> Democrat
<input type="radio"/> <b>Thom Tillis</b> Republican <input type="radio"/> <b>Shannon W. Bray</b> Libertarian <input type="radio"/> <b>Cal Cunningham</b> Democrat <input type="radio"/> <b>Kevin E. Hayes</b> Constitution	<b>NC Commissioner of Insurance</b> (You may vote for ONE)	<b>NC Court of Appeals Judge Seat 4</b> (You may vote for ONE)
	<input type="radio"/> <b>Mike Causey</b> Republican <input type="radio"/> <b>Wayne Goodwin</b> Democrat	<input type="radio"/> <b>Tricia Shields</b> Democrat <input type="radio"/> <b>April C. Wood</b> Republican
<b>US House of Representatives District 11</b> (You may vote for ONE)	<b>NC Commissioner of Labor</b> (You may vote for ONE)	<b>NC Court of Appeals Judge Seat 5</b> (You may vote for ONE)
<input type="radio"/> <b>Tamara Zwinak</b> Green <input type="radio"/> <b>Madison Cawthorn</b> Republican <input type="radio"/> <b>Moe Davis</b> Democrat <input type="radio"/> <b>Tracey DeBruhl</b> Libertarian	<b>NC Secretary of State</b> (You may vote for ONE)	<input type="radio"/> <b>Lora Christine Cubbage</b> Democrat <input type="radio"/> <b>Fred Gore</b> Republican
<b>STATE OFFICES</b>	<input type="radio"/> <b>E.C. Sykes</b> Republican <input type="radio"/> <b>Elaine Marshall</b> Democrat	<b>NC Court of Appeals Judge Seat 6</b> (You may vote for ONE)
<b>NC Governor</b> (You may vote for ONE)	<b>NC Superintendent of Public Instruction</b> (You may vote for ONE)	<input type="radio"/> <b>Gray Styers</b> Democrat <input type="radio"/> <b>Chris Dillon</b> Republican
<input type="radio"/> <b>Al Pisano</b> Constitution <input type="radio"/> <b>Roy Cooper</b> Democrat <input type="radio"/> <b>Steven J. DiFiore</b> Libertarian <input type="radio"/> <b>Dan Forest</b> Republican	<input type="radio"/> <b>Catherine Truitt</b> Republican <input type="radio"/> <b>Jen Mangrum</b> Democrat	<b>Continue Voting next side</b>
	<b>- VOTE BOTH SIDES -</b>	
	North Carolina	Ballot Style B0011

SAMPLE BALLOT

SAMPLE BALLOT

SAMPLE BALLOT

SAMPLE BALLOT

SAMPLE BALLOT

SAMPLE BALLOT

SAMPLE BALLOT

SAMPLE BALLOT

SAMPLE BALLOT

SAMPLE BALLOT

SAMPLE BALLOT

SAMPLE BALLOT

<b>NC Court of Appeals Judge Seat 7 (You may vote for ONE)</b>	<b>COUNTY OFFICES</b>	<b>Buncombe County Schools Board of Education Roberson District (You may vote for ONE)</b>
<input type="radio"/> <b>Reuben F. Young</b> Democrat	<b>Board of Commissioners Chairman (You may vote for ONE)</b>	<input type="radio"/> <b>Amy Churchill</b>
<input type="radio"/> <b>Jeff Carpenter</b> Republican	<input type="radio"/> <b>Robert Pressley</b> Republican	<input type="radio"/> _____ Write-in
<b>NC Court of Appeals Judge Seat 13 (You may vote for ONE)</b>	<input type="radio"/> <b>Brownie Newman</b> Democrat	
<input type="radio"/> <b>Chris Brook</b> Democrat	<b>Board of Commissioners District 3 (You may vote for ONE)</b>	<b>TOWN OF BILTMORE FOREST</b>
<input type="radio"/> <b>Jefferson G. Griffin</b> Republican	<input type="radio"/> <b>Parker Sloan</b> Democrat	<b>Mayor (You may vote for ONE)</b>
<b>NC State Senate District 49 (You may vote for ONE)</b>	<input type="radio"/> <b>Joe Belcher</b> Republican	<input type="radio"/> <b>George F. Goosmann III</b>
<input type="radio"/> <b>Bob Penland</b> Republican	<b>Register of Deeds (You may vote for ONE)</b>	<input type="radio"/> _____ Write-in
<input type="radio"/> <b>Julie Mayfield</b> Democrat	<input type="radio"/> <b>Drew Reisinger</b> Democrat	<b>Commissioner (You may vote for THREE)</b>
<b>NC House of Representatives District 116 (You may vote for ONE)</b>	<b>NONPARTISAN OFFICES</b>	<input type="radio"/> <b>Fran Cogburn</b>
<input type="radio"/> <b>Brian Turner</b> Democrat	<b>Soil and Water Conservation District Supervisor (You may vote for ONE)</b>	<input type="radio"/> <b>E. Glenn Kelly</b>
<input type="radio"/> <b>Eric Burns</b> Republican	<input type="radio"/> <b>Alan Ditmore</b>	<input type="radio"/> _____ Write-in
<b>DISTRICT OFFICES</b>	<input type="radio"/> <b>Gary Higgins</b>	<input type="radio"/> _____ Write-in
<b>NC District Court Judge District 28 Seat 6 (You may vote for ONE)</b>	<input type="radio"/> _____ Write-in	<input type="radio"/> _____ Write-in
<input type="radio"/> <b>Andrea Dray</b> Democrat	<b>BOARD OF EDUCATION</b>	<b>End of Ballot</b>
<b>NC District Court Judge District 28 Seat 7 (You may vote for ONE)</b>	<b>Buncombe County Schools Board of Education At-Large (You may vote for ONE)</b>	
<input type="radio"/> <b>Calvin Hill</b> Democrat	<input type="radio"/> <b>Amanda Simpkins</b>	
	<input type="radio"/> <b>Mark Watman</b>	
	<input type="radio"/> _____ Write-in	
	<b>Buncombe County Schools Board of Education North Buncombe District (You may vote for ONE)</b>	
	<input type="radio"/> <b>Ann B. Franklin</b>	
	<input type="radio"/> _____ Write-in	
	<b>Buncombe County Schools Board of Education Owen District (You may vote for ONE)</b>	
	<input type="radio"/> <b>Everett D. Pittillo</b>	
	<input type="radio"/> <b>Linda Tatsapaugh</b>	
	<input type="radio"/> <b>Margaret (Peggy) Buchanan</b>	
	<input type="radio"/> _____ Write-in	
	<b>- VOTE BOTH SIDES -</b>	
	North Carolina	Ballot Style B0011